

The 300 Million Year Old Rock that Burns - Coal

Did you know that coal was first discovered west of the Mississippi River in Bates County?

And that the only operating coal mine in Missouri is located in Bates County?

Learn more about the role coal played in the development of Bates County and also western Missouri.



Walk Back in Time

Wed. May 16th

Noon - 1:00pm

Bring a sack lunch

Poplar Heights Living History Farm

Call 660-200-5620 or email info@poplarheightsfarm.org for all the details

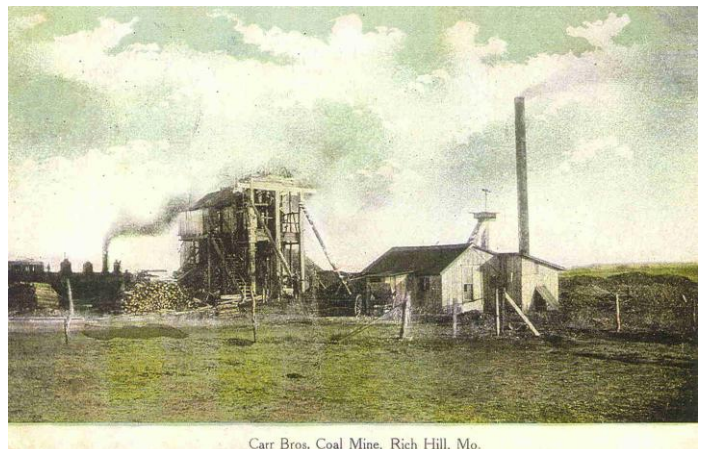
It's Free - No advance registration required

Poplar Heights Living History Farm is located northeast of Butler, Missouri. In

Butler, take Highway H east to UU

Highway, turn north and go 2 miles to County Road #5004, turn east and go 1.2 miles, parking is at the Learning Center on the north side of the road.

Poplar Heights Farm is a program of the Marais des Cygnes Society, a 501 c3 charitable foundation.



Carr Bros. Coal Mine, Rich Hill, Mo.